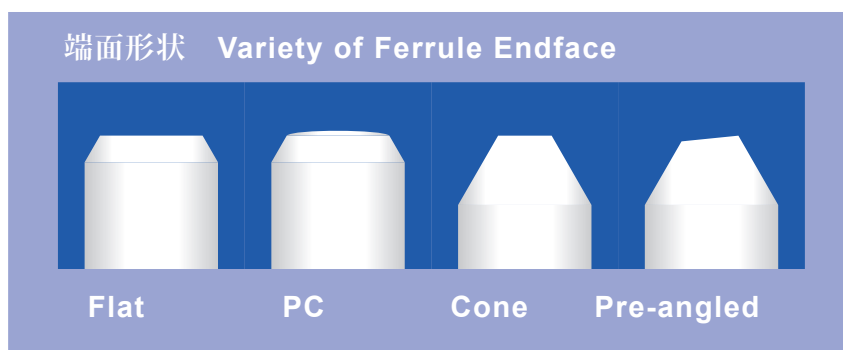
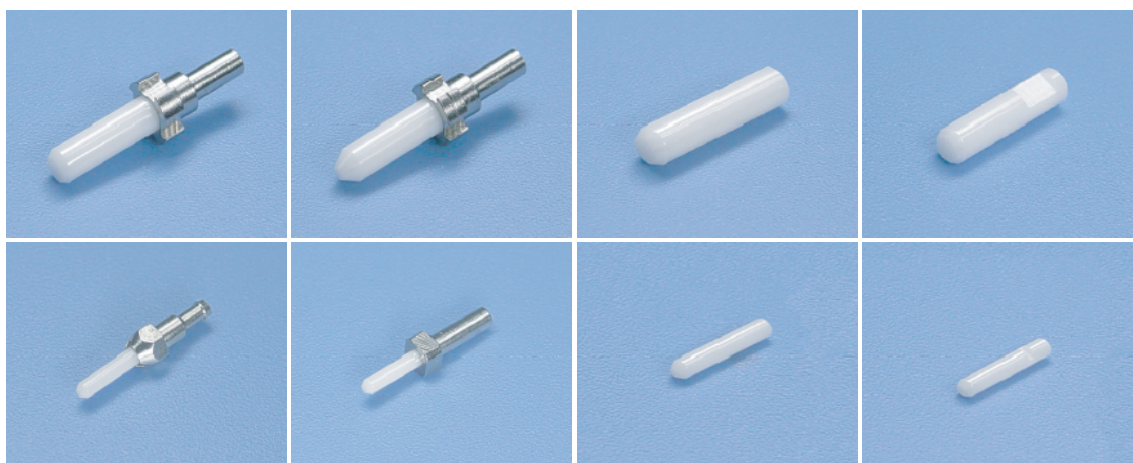


■ 標準セラミックフェルール Standard Ceramic Ferrule



□ 特徴 Feature

- 高精度及び高信頼性 High precision and reliability
- 各種フェルールに対応 Varieties of ferrule : SC, ST, LC, MU, SMA
- 各種端面形状に対応 Varieties of endface : FLAT, PC, CONE, PRE-ANGLED

□ 特性 Technical Specification

● SC Ferrule

	Single Mode	Multi Mode	Master
外径 Outside Diameter		$\Phi 2.4990$	
外径交差 OD Tolerance	± 0.0005	± 0.001	± 0.0003
同芯度 Concentricity	≤ 0.001	≤ 0.004	≤ 0.0003
内径 Inner Diameter	$\Phi 0.125 \sim \Phi 0.127$		
内径交差 ID Tolerance	$+ 0.001 / 0$	$+ 0.004 / 0$	$+ 0.0005 / 0$
フェルール長 Ferrule Length	SC : 10.50 ± 0.05 , ST : 12.70 ± 0.05		
端面曲率半径 End Curve Radius	20 $+5/-10$		

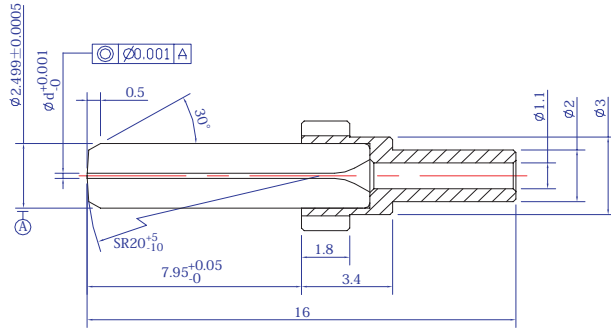
● LC Ferrule

	Single Mode	Multi Mode	Master
外径 Outside Diameter		$\Phi 1.2490$	
外径交差 OD Tolerance	± 0.0005	$+0.0005 / -0.0015$	± 0.0003
同芯度 Concentricity	≤ 0.001	≤ 0.004	≤ 0.0003
内径 Inner Diameter	$\Phi 0.125 \sim \Phi 0.127$		
内径交差 ID Tolerance	$+ 0.001 / 0$	$+ 0.004 / 0$	$+ 0.0005 / 0$
フェルール長 Ferrule Length	6.40 $+0.1/-0$		

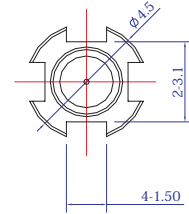
● SC/SM/PC



SC シングルモードフェルール
SC Predome Endface Single Mode Ferrule



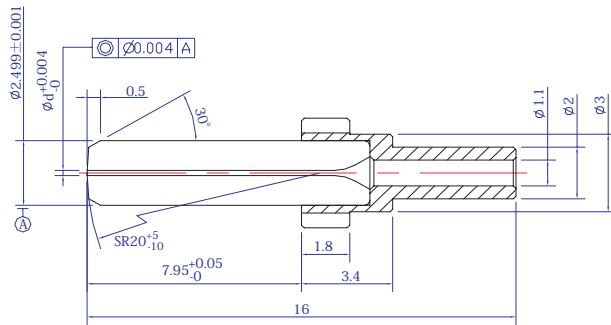
ID	125.3 um
	125.5 um
	126.0 um
	127.0 um



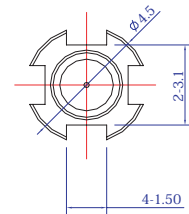
● SC/MM/PC



SC マルチモードフェルール
SC Predome Endface Multi Mode Ferrule



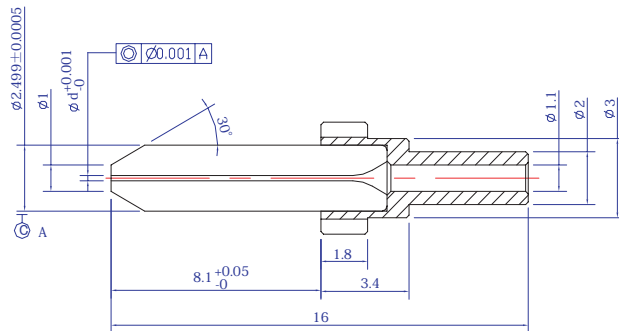
ID	126.0 um
	127.0 um



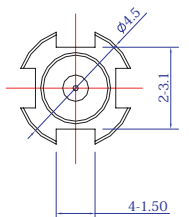
● SC/SM/Cone



SC 先端コーン形状 APC 用フェルール
Cone Type SC APC Single Mode Ferrule



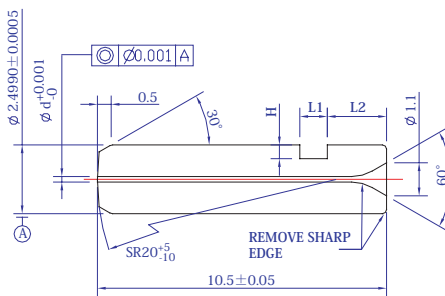
ID	125.3 um
	125.5 um
	126.0 um



● SC/SM/PC/Slot



SC シングルモードフェルール スロット加工
Slotted SC Single Mode Ferrule

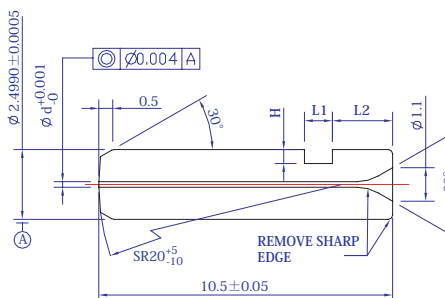


ID	125.3 um
	125.5 um
	126.0 um

● SC/MM/PC/Slot



SC マルチモードフェルール スロット加工
Slotted SC Multi Mode Ferrule

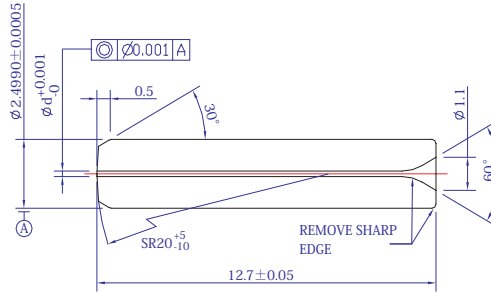


ID	126.0 um
	127.0 um

● ST/SM/PC

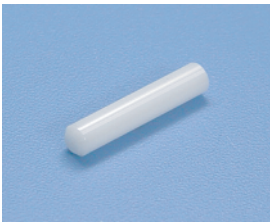


ST シングルモードフェルール
ST Predome Endface Single Mode Ferrule

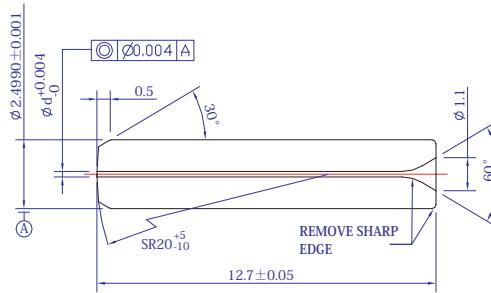


ID	125.3 um
	125.5 um
	126.0 um
	127.0 um

● ST/MM/PC



ST マルチモードフェルール
ST Predome Endface Multi Mode Ferrule

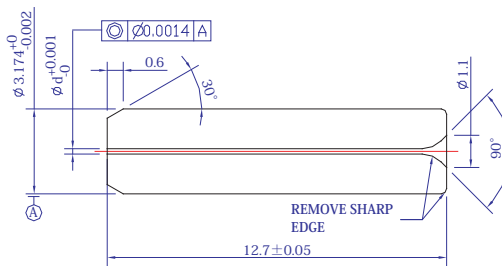


ID	126.0 um
	127.0 um

● SMA/SM



SMA シングルモードフェルール
SMA Single Mode Ferrule

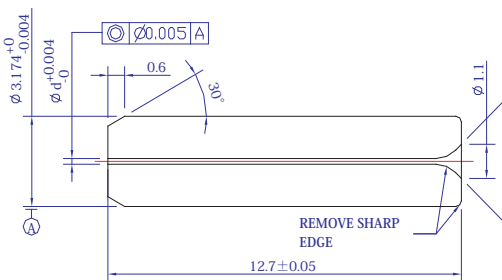


ID	125.3 um
	126.0 um
	127.0 um

● SMA/MM



SMA マルチモードフェルール
SMA Multi Mode Ferrule

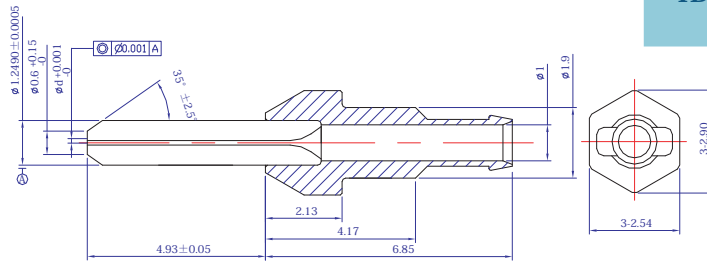


ID	127.0 um
	140.0 um

● LC/SM



LC シングルモードフェルール
LC Single Mode Ferrule

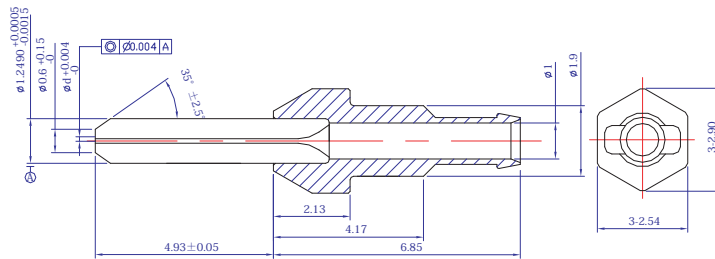


ID	125.3 um
	125.5 um
	126.0 um
	127.0 um

● LC/MM



LC マルチモードフェルール
LC Multi Mode Ferrule

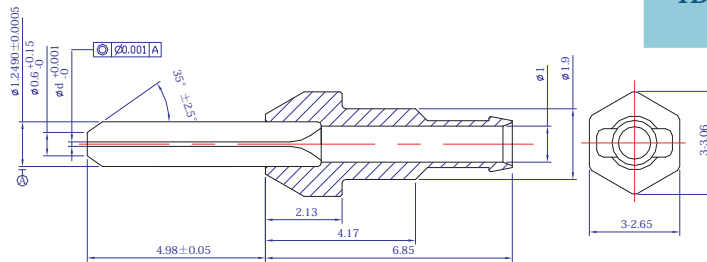


ID	126.0 um
	127.0 um

● LC/SM/APC



LC APC シングルモードフェルール
LC APC Single Mode Ferrule

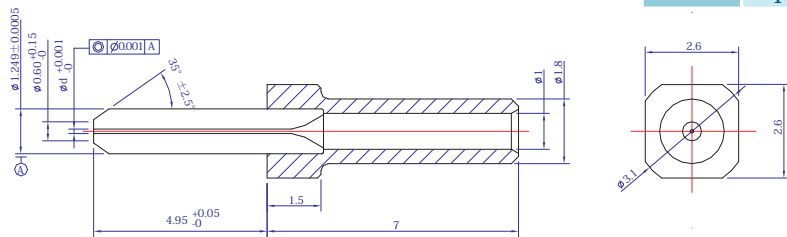


ID	125.3 um
	125.5 um
	126.0 um
	127.0 um

● MU/SM



MU シングルモードフェルール
MU Single Mode Ferrule

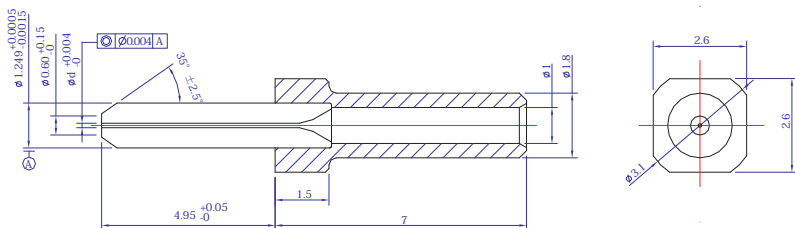


ID	125.3 um
	125.5 um
	126.0 um

● MU/MM



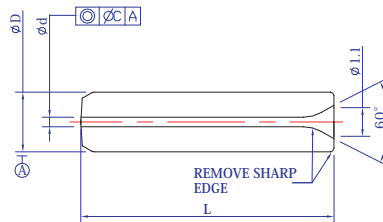
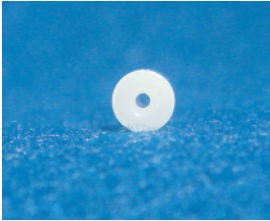
MU マルチモードフェルール
MU Multi Mode Ferrule



ID	126.0 um
	127.0 um

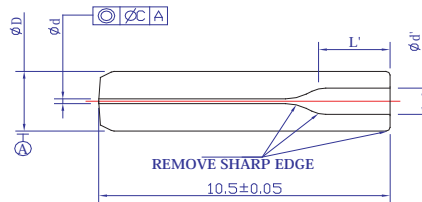
■ 大内径フェルール Large Hole Ferrule

型式	Part No.	LFE-LH-SC	LFE-LH-LC	LFE-LH-SMA	LFE-LH-SDL
外径	Outside Diameter	Φ2.4990	Φ1.2490	Φ3.1740	Φ1.1~Φ3.2
外径交差	OD Tolerance	±0.001	+0.005/-0.0015	+0/-0.004	±0.001
全長	Length	10.50±0.05	6.40+0.1/-0	12.70±0.05	5~12.50
内径	Inner Diameter	Φ128 um~Φ700 um			
内径区間	ID Range	128 um~200 um	201 um~400 um	401 um~700 um	
内径交差	ID Tolerance	≤ 5 um	≤ 10 um		
同心度	Concentricity	≤ 10 um	≤ 20 um	≤ 40 um	



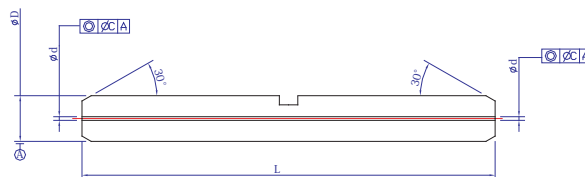
■ ノズル形状フェルール Funnel Ferrule

型式	Part No.	LFE-SC-Funnel	LFE-LC-Funnel
外径	Outside Diameter D	Φ1.8 ~ Φ2.50	Φ1.00 ~ Φ1.40
内径	Inner Diameter d	Φ0.125 ~ Φ0.127	
ノズル径	Funnel Diameter d'	Φ1.00	Φ0.6
同心度	Concentricity C	≤ 0.001 (single mode); ≤ 0.004 (multi mode)	
ノズル長	Inner Hole Length L'	0 ~ 5	
全長	Ferrule Length L	SC : 10.5±0.05, ST : 12.7±0.05	



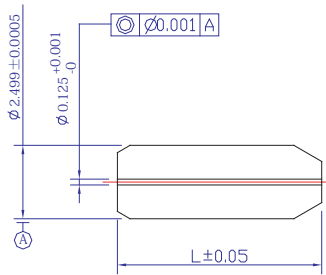
■ ロングフェルール Long Ferrule

型式	Part No.	LFE-SC-L	LFE-LC-L
外径	Outside Diameter D	Φ2.4990±0.0005	Φ1.2490±0.0005
同心度	Concentricity C	≤ 0.0014 (Concentricity Assurance at Both Ends)	
内径	Inner Diameter d	Φ0.125 ~ Φ0.127	
スロット	Slot	slot or no slot	
全長	Length L	5 ~ 23	

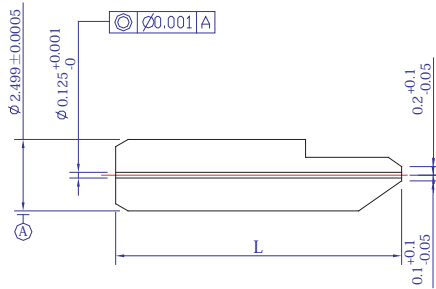


■ 特殊フェルール Special Ferrule & Assembly

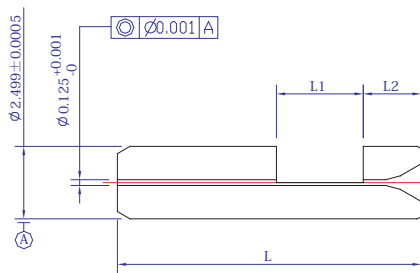
● LFEN-SC-S1



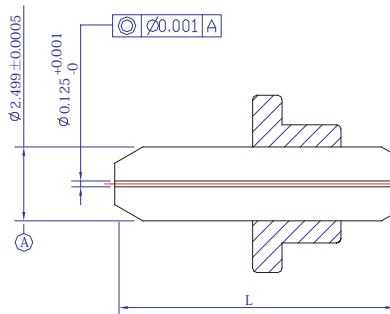
● LFEN-SC-S2



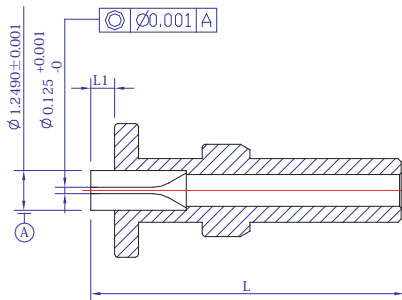
● LFEN-SC-S3



● LFEN-SC-S4



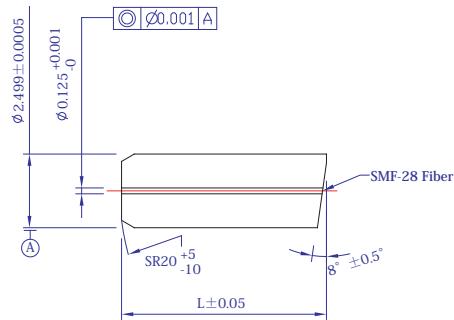
● LFEN-LC-S3



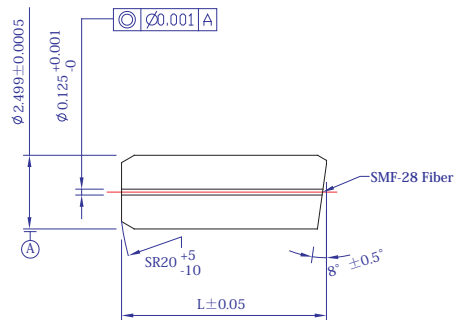
特性 Technical Specification

形状 Type	SC SM Stub	LC SM Stub
外径 Outside Diameter	$\Phi 2.4990 \pm 0.0005$	$\Phi 1.2490 \pm 0.0005$
同心度 Concentricity	≤ 0.001	
内径 Inner Diameter	$\Phi 0.125 +0.001/-0$	
全長 Length	2.5 ~ 10	2.5 ~ 6

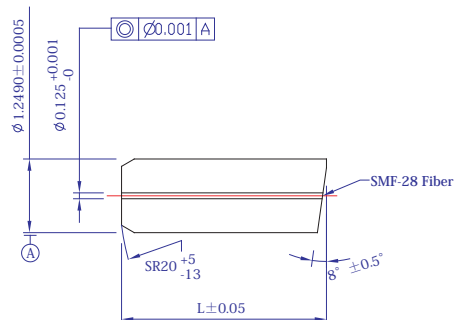
● LFES-SC-PF



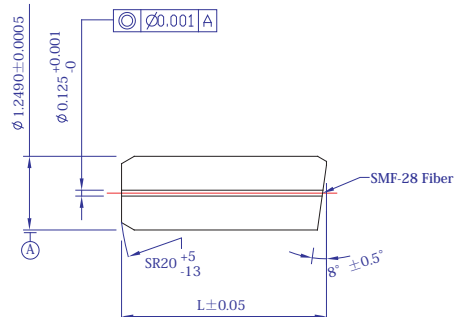
● LFES-SC-PA

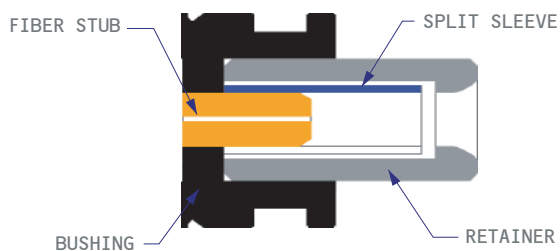
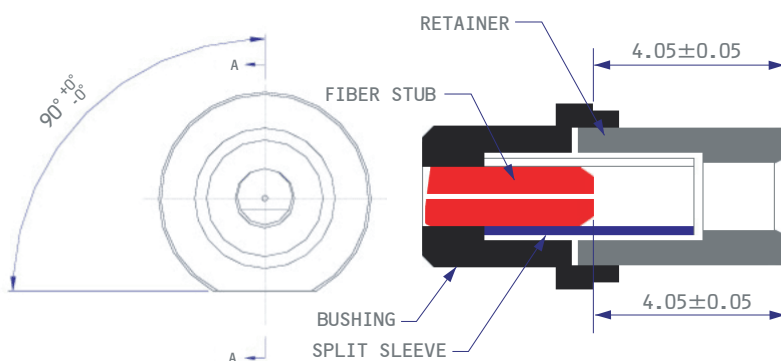


● LFES-LC-PF



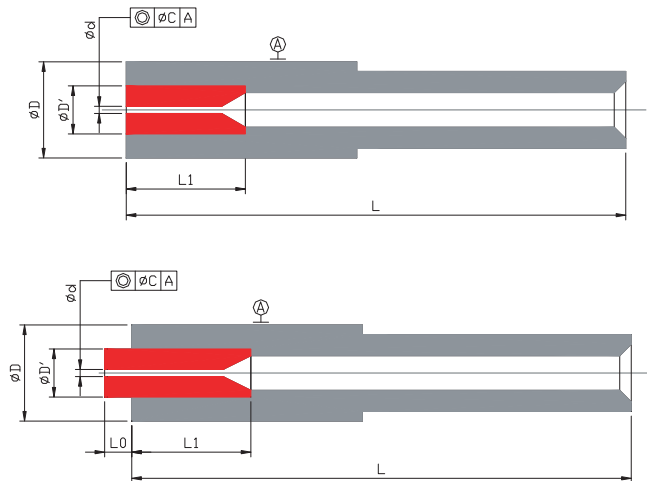
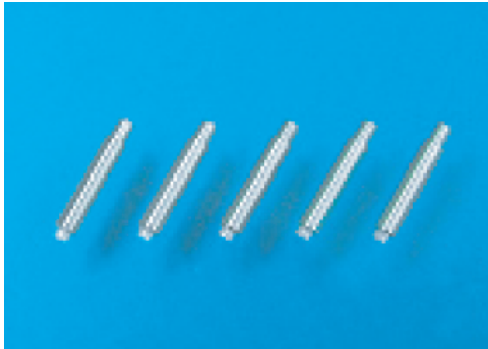
● LFES-LC-PA



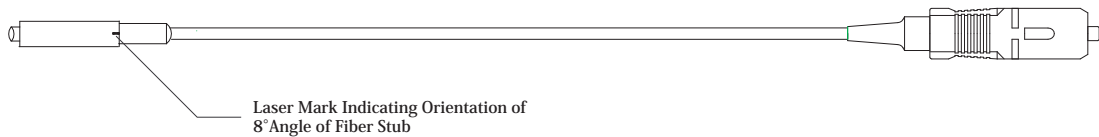
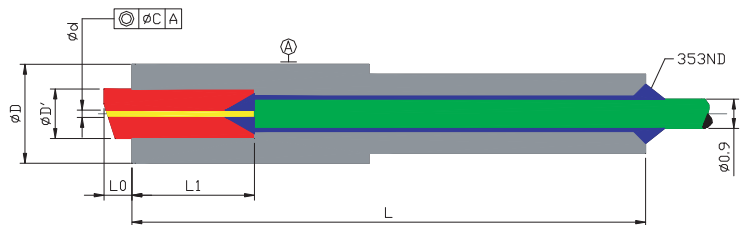
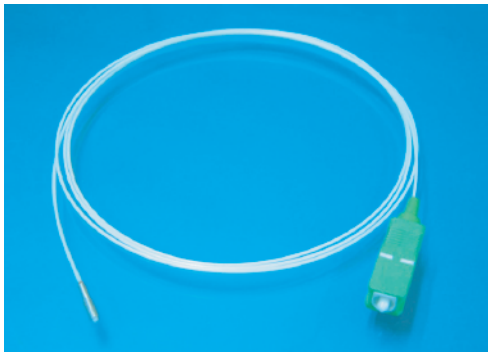
■ ROSA レセプタクル ROSA LC Receptacle

■ TOSA レセプタクル TOSA LC Receptacle

□ 特性 Technical Specification

レセプタクル ROSA & TOSA Receptacle		
同心度	Stub Concentricity	$\leq 0.7 \mu\text{m}$
挿入損失量	Insertion Loss	$\leq 0.2 \text{ dB}$
反射減衰量	Return Loss	$\geq 30 \text{ dB}$
スリーブ	Split Sleeve	Ceramic
ブッシュ	Bushing	SUS 304
リテーナー	Retainer	SUS 304 or SUS 303
保管温度	Storage Temperature Range	- 40°C ~ 85°C
優れた安定性、信頼性及び互換性 Excellent stability, Reliability and Exchangeability		
LC及びSCの対応が可能 Both LC and SC Receptacle are available		
お客様の仕様・要求に対応した専用設計・製作 Special design and manufacture according to customer requirement		

■ モジュールフェルール Module Ferrule



■ モジュールピッグテイル Module Pigtail



□ 特性 Technical Specification

タイプ	Mode	Single Mode	Multi Mode
フランジ長	Metal Holder L	Max. 14.0mm for SUS304, Max. 15.0mm for SUS303	
スタブ長	Stub Length L1	3.0mm (Reference)	
スタブ突出量	Stub Protruding L0	0.5 ± 0.1	
外径	OD (ΦD)	Φ1.8 ~ 2.5	
公差	Tolerance	± 0.005	
同心度	Concentricity ΦC	0.005	0.02
スタブ Ferrule Stub	OD : ΦD'	1.25, 1.40	
	ID : Φd	125um, 126um, 127um	
	ID Tolerance	+ 0.001 / 0	
フランジ外径	Shape of Metal	Customer Design	
フランジ長	Material	SUS304, SUS303	
コネクタ	Connector	SC, FC, LC, MU / PC & APC	